

KEY BENEFITS OF RUNNING MICROSOFT DYNAMICS NAV FOR HOME BUILDERS VS. SAGE TIMBERLINE



Jobs:

- Create a job inside WMS
- Create suppliers right from WMS
- No need to open multiple applications anymore to create jobs
- No need to push changes from WMS to Accounting, all done automatically
- Expanded Field Lengths - Job Number Size

Suppliers:

- Supplier information is synced between WMS and Dynamics NAV via live integration

Budgets:

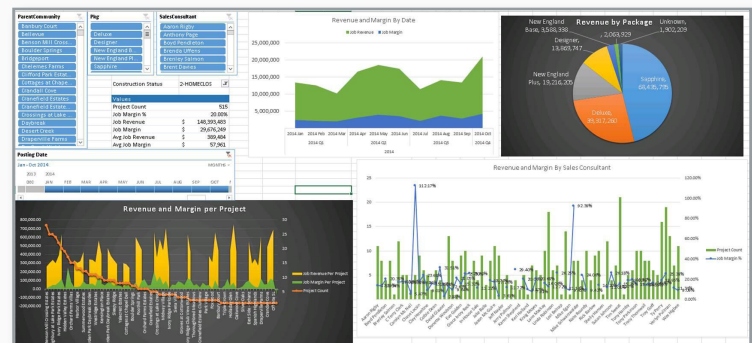
- Budgets and purchase orders go directly to accounting

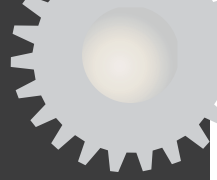
Financial:

- Can run multiple companies / LLCs in company database
- Can share one set of vendors among all companies
- Consolidated 1099s for vendors across multiple companies / LLCs
- MICR Checks. No need to purchase Accounts Payable Check Stock
- Very flexible chart of accounts
- Multi-company consolidations
- Automated bank draw reporting

Additional Features:

- Job cost allocation
- Vendor insurance verification against expiration dates/missing information
- Retainage made simple
- Integrated closing statements
- True BI (Business Intelligence) - Data cubing and data warehousing allows users to cube live data inside of Excel to run fast, accurate reports, while also creating graphical dashboards that are easy to read / change.





..... **Additional Features (cont'd):**

- All transactions done in one Window, no more multiple applications
- From home screen you can add Outlook and see your emails while inside of Microsoft Dynamics NAV
- No need to add prefixes and suffixes to your chart of accounts, tracked through dimensions
- Unlimited amount of companies you can set up in one database
- Extensive “drill-downs” on all data
- Ability to run multiple types of companies other than home building
- Notices of Right to Lien (NORTL) monitoring & joint checks
- Microsoft SQL Database
- Look and feel of Microsoft Office
- Automatic bidirectional integration between WMS and Microsoft Dynamics NAV
- Multiple type of clients - Workstation, Web, Tablet and Phone
- Word and Excel integration
- Built-in templates for the importing of general ledger and accounts payable transactions
- Integrated Document Management - Can scan or drag-and-drop documents to transactions and records
- Integrated with Microsoft PowerBI
- Multiple purchase order types - job and non-job
- Extended applications - fixed assets, cash flow reporting and inventory
- Integrated closing procedures, e.g. single page entry for HUD Statements